

# Facilitating Communication and Language in Young Children with Hearing Loss

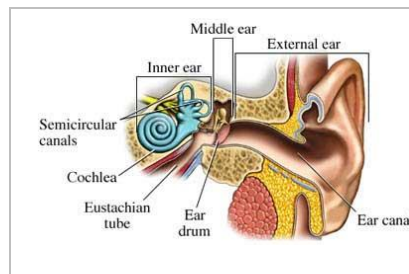
Tri Borough Teachers of the Deaf and Specialist Speech and Language Therapist

21<sup>st</sup> February 2018, 9:30-12:30



**Westminster  
Special Schools**  
Training & Outreach

**A provider of specialist  
training for Tri-borough  
school communities, other  
London Boroughs, and  
nationally, through a range of**



## **Access & INCLUSION CENTRE**

Queen Elizabeth II Jubilee School,  
Kennet Road, London, W9 3LG Tel:  
020 7641 5825, Fax: 020 7641 5825

Email:  
[training@qe2cp.westminster.sch.uk](mailto:training@qe2cp.westminster.sch.uk)

This course will cover children's typical language development from birth to 5 years of age and the impact a hearing loss has on this process. You will learn how to support deaf children's language and communication in your nursery/classroom.

**Cohort:** This course is suitable for anyone working with children who have a hearing loss in a mainstream setting

**Cost:** Free to Tri- Borough settings. £50 for all other participants.

This course will be held at the Access & Inclusion Centre, Queen Elizabeth II Jubilee School, Kennet Road, London, W9 3LG

For more information contact Carla Pereira

Tel: 020 7641 5825 Email: [training@qe2cp.westminster.sch.uk](mailto:training@qe2cp.westminster.sch.uk)

Bookings on line at [www.qe2cp.westminster.sch.uk](http://www.qe2cp.westminster.sch.uk)