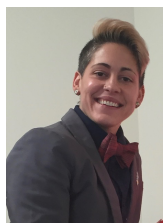


Who Are We?



Amy Laurent, PhD, OTR/L specializes in the education of autistic individuals. Her work involves creating learning environments designed to facilitate children's active engagement at home, in schools, and throughout their communities. She is a co-

author of the SCERTS Model and frequently lectures around the globe. She is passionate about neurodiversity and helping others to honor and understand the implications of "different ways of being" in relation to navigating the physical and social world. Dr. Laurent strives to practice what she preaches and uses her love of play, dance, and movement to meet her own regulatory needs.



JÂcquelyn Fede, PhD is a super fun, Autistic Self-Advocate, developmental psychologist and program evaluator. Her research interests include immigration policy, autism, and community engagement. She uses her

experience to mentor other autistics and to help educate others about autism through lecturing, blogging and consulting on evaluation projects. A full scholarship Division I athlete in college, Dr. Fede continues to meet her sensory needs by seeking extreme physical activity. She also enjoys the use of creativity and art for expression.



The Energy Meter

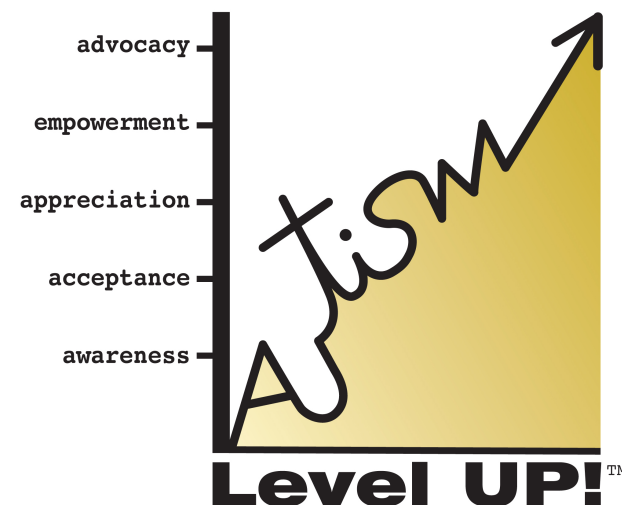


This support was formulated to help autistic individuals reflect on their arousal states in relation to the environment. Free of emotional labels, The Energy Meter is helpful for individuals who struggle with emotional identification and expression, but are also working to understand the concepts of regulation and how to adjust their energy level to successfully engage in activities.

"As an #ActuallyAutistic person who has always been unable to name emotions and who expresses them differently than is often expected, this support is immensely helpful. For me - the idea of having to name the emotion is a deterrent from seeking help. This helps me to overcome the "language barrier" and to access help." ~J. Fede

Autism Level UP!™

Wherever you are,
take the next step!



Amy C. Laurent, PhD, OTR/L
JÂcquelyn Fede, PhD

Email: autismlevelup@gmail.com

Phone: 401.219.0201

Address: P.O. Box 339
North Kingstown, RI
02852

Websites:

www.facebook.com/AutismLevelUP/

www.amy-laurent.com

www.itcannotbecontained.com

About

Amy and JÂcquelyn have joined forces to form **Autism Level UP!** Our philosophy is that through education, accessible resources, practical strategies and a commitment to consistently incorporating the experiences and perspectives of autistic people, we can support the leveling up of society when it comes to autism and neurodiversity. Of course, our primary goal is to support autistic individuals, but the more we are able to spread real awareness and support others in moving from awareness to acceptance, acceptance to appreciation, appreciation to empowerment and from empowerment to activism, the more positive change we will see at those large institutional and societal levels that can greatly benefit the autistic community. So we do aim first and foremost to empower autistic individuals to navigate their world, but we also aim to make the world a more autism-friendly environment and the universe more accommodating to the neurodiverse - after all, it is a partnership and change should not rest solely on the shoulders of the autistic community.



Services

Consultation

Autism Level UP! collaborates with and consults to a wide range of professional organizations, educational institutions, and family support agencies who are seeking to provide appropriate, evidenced-based supports for autistic individuals at multiple levels:

1) Programatic

Dedicated to supporting systemic implementation of developmentally-appropriate, person-centered practices organization wide.

2) Classroom

Committed to helping creating classroom cultures and learning environments that facilitate active engagement, infuse motivating and meaningful activities, and support the development of relationships.

3) Individual

Focused on collaborating with individuals, families, and educational teams to provide person-specific, developmentally-appropriate, evidenced based educational recommendations and supports to empower autistic individuals to navigate their days.

Services Continued

Professional Development

Amy and JÂcquelyn are committed to the provision of educational opportunities for families, educational staff, and future professionals. They work closely with contracting agencies to tailor the content and curriculum of trainings to meet the needs of intended audiences.

Evaluation and Research

Autism Level UP! consults and conducts evaluation and research projects that focus on autism and programming for autistics. Through this service we aim to provide data, feedback and recommendations for program improvement or new initiatives.

Autistic Mentorship

We facilitate unique, individualized support and guidance for autistic youth through the establishment of a trusting relationship with an autistic adult.

Assessment

We provide comprehensive assessment utilizing the SCERTS Assessment Process to determine meaningful, developmentally appropriate, functional goals and objectives. For these we use direct observations of the individual's natural environments including effectiveness of the interactive and educational supports provided by communicative partners.