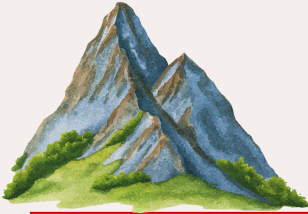




COLLEGE PARK SCHOOL

MOUNTAIN CLASS NEWSLETTER



APRIL 2026

Class information

What are we doing this term?

This term, our topic is “Plants and Gardens.”

Students will explore plants through practical, hands-on activities across subjects. In Science, they will learn about growing fruits and vegetables and how plants are used for food. In Maths, students will develop their understanding of measurement, comparing plants, as well as recognising patterns and using positional language through practical activities linked to nature. In English, students will build vocabulary and communication through activities related to gardens and nature.

They will also explore how plants and environments change over time in Topic lessons. In PSHE and Life Skills, students will focus on teamwork, independence, and community experiences, including local trips.




Class Trips

London Zoo, Hampstead Heath, Regent or Holland Park. (planned for Tuesdays and/or Thursdays).

WLIAF Festival Details

West London Inclusive Arts Festival

We are excited to lead our next West London Inclusive Arts Festival in May. The Royal Albert Hall will be hosting our live performances this year and we are thrilled to be given access to this world-famous venue.

Proudly supported by  JOHN LYON'S CHARITY

Tuesday 19th & Wednesday 20th May -
WLIAF Festival (Penguin Class)

Wednesday 20th May - GRAEAE Theatre
workshop (Giraffe Class)

Friday 3rd July - Meet the Families event
@ The Royal Albert Hall

More information coming soon!

Upcoming

- ✦ 4TH MAY - BANK HOLIDAY
- ✦ 19TH - 20TH MAY - WLIAF FESTIVAL
- ✦ 25TH - 29TH MAY - HALF TERM